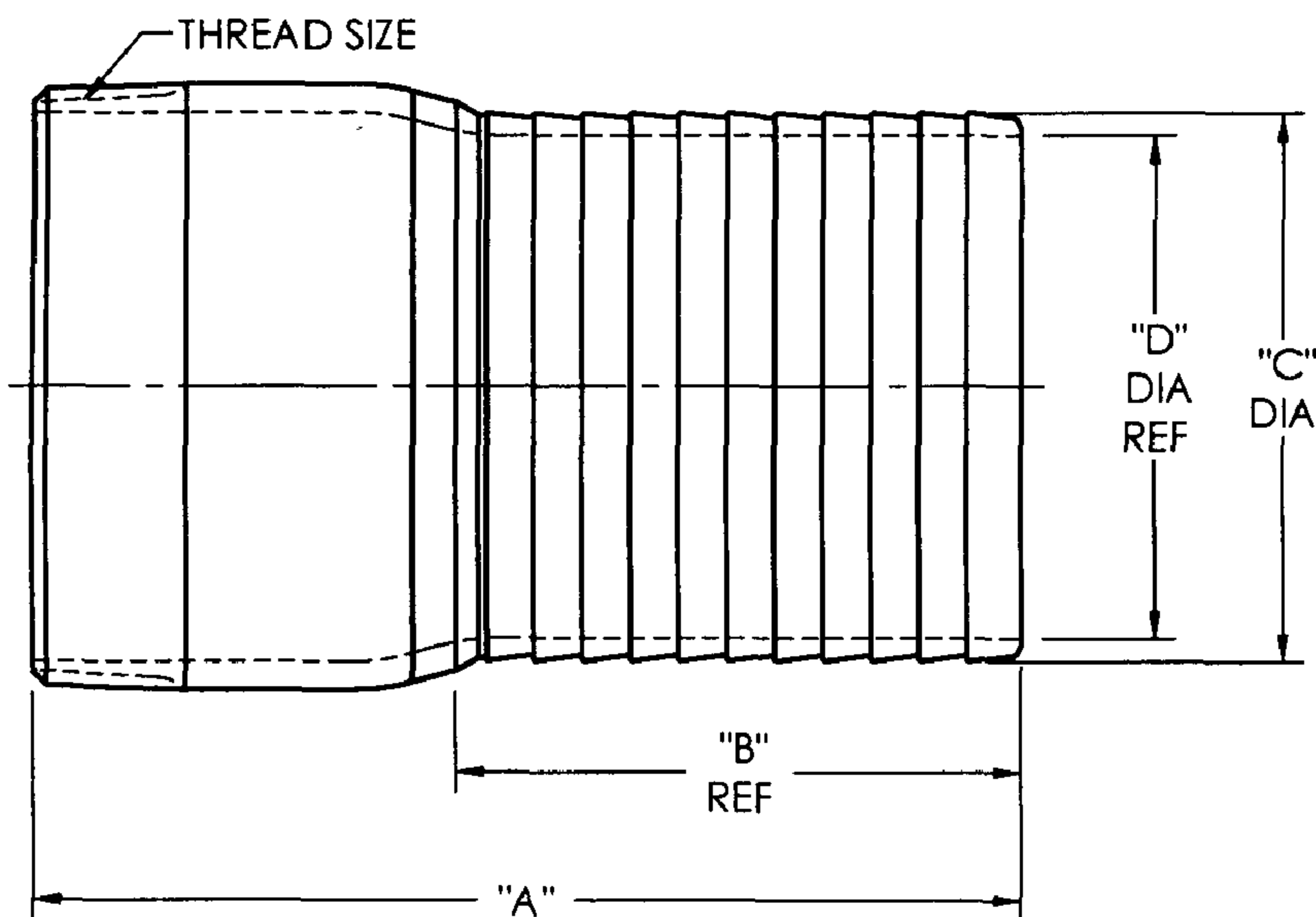


# STXX STCXX

6/19/09

CUSTOMER DWG

SIZE	PART NO.	A	B	C	D	THREAD SIZE	MATERIAL
1/2	ST1	3-1/8	1-5/8	17/32	3/8	1/2 - 14 NPT	13/16 BARSTOCK
3/4	ST5	3-1/8	1-5/8	25/32	9/16	3/4 - 14 NPT	1 BARSTOCK
1	ST10	3-3/8	1-5/8	1-1/32	13/16	1 - 11.1/2 NPT	1 1/4 BARSTOCK
1-1/4	ST15	3-15/16	2-1/32	1-9/32	1-1/32	1.1/4 - 11.1/2 NPT	1-1/4 SCHD. 40
1-1/2	ST20	4-5/32	2-7/32	1-17/32	1-9/32	1.1/2 - 11.1/2 NPT	1-1/2 SCHD. 40
2	ST25	4-11/16	2-23/32	2-1/32	1-3/4	2 - 11.1/2 NPT	2 SCHD. 40
2-1/2	ST30	5-9/16	2-25/32	2-17/32	2-5/32	2.1/2 - 8 NPT	2-1/2 SCHD. 40
3	ST35	6	3-3/16	3-1/32	2-11/16	3 - 8 NPT	3 SCHD. 40
4	ST40	7-3/16	3-25/32	4-1/32	3-21/32	4 - 8 NPT	4 SCHD. 40
5	ST50	9	5-5/32	5-1/32	4-5/8	5 - 8 NPT	5 SCHD. 40
6	ST60	11	6-1/4	6-1/16	5-9/16	6 - 8 NPT	6 SCHD. 40
8	ST80	12-1/8	7-5/16	8-1/16	7-9/16	8 - 8 NPT	8 SCHD. 40
10	ST100	13-1/8	8-1/2	10-1/16	9-9/16	10 - 8 NPT	10 SCHD. 40
12	ST120	15	9-7/8	12-1/16	11-15/32	12 - 8 NPT	12 SCHD. 40
14	ST140	18	12	14	13-1/4	14 - 8 NPT	14 SCHD. 30



ST-XX NIPPLES ARE PLAIN FINISH  
STC-XX NIPPLES ARE ZINC PLATED

CUSTOMER DWG

### AGREEMENT TO MAINTAIN CONFIDENTIALITY

This drawing is owned by Dixon Valve & Coupling Co. and shall be returned upon demand. It is loaned on condition that it shall not be copied or reproduced or submitted to others without the owners consent. In accepting it subject to this condition the recipient further agrees that this drawing or any design detail or concept disclosed herein shall not be used in any way detrimental to or in competition with the owner. If the recipient does not agree to the terms of this agreement they shall return this drawing immediately.



<b>DIXON VALVE &amp; COUPLING CO.</b>		
<b>U. S. A.</b>		
TITLE DIMENSIONS FOR KING COMBINATION NIPPLES		
DRWN BY: NPC 07/30/08	CHECKED BY: <i>Jay B</i> 8/8/08	APPROVAL: <i>JOB</i> 8/8/08
MAT'L: CARBON STEEL		<b>STXX STCXX</b>