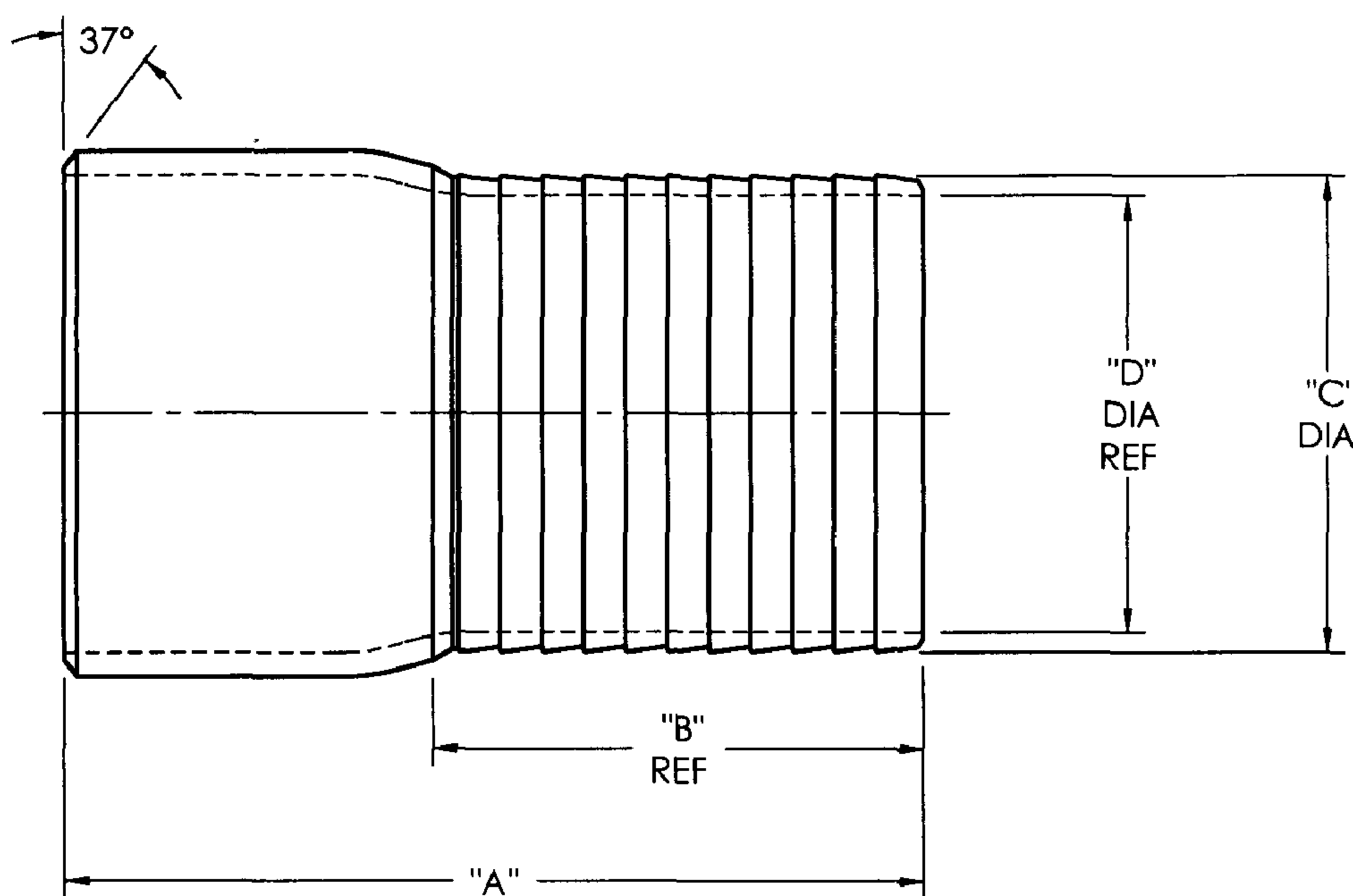


STBXX

6/19/09

CUSTOMER DWG

SIZE	PART NO.	A	B	C	D	MATERIAL
1/2	STB1	3-1/8	1-5/8	17/32	3/8	13/16 O.D. BARSTOCK
3/4	STB5	3-1/8	1-5/8	25/32	9/16	1 O.D. BARSTOCK
1	STB10	3-3/8	1-5/8	1-1/32	13/16	1-1/4 O.D. BARSTOCK
1-1/4	STB15	3-15/16	2-1/32	1-9/32	1-1/32	1-1/4 SCHD. 40
1-1/2	STB20	4-5/32	2-7/32	1-17/32	1-9/32	1-1/2 SCHD. 40
2	STB25	4-11/16	2-23/32	2-1/32	1-3/4	2 SCHD. 40
2-1/2	STB30	5-9/16	2-25/32	2-17/32	2-5/32	2-1/2 SCHD. 40
3	STB35	6	3-3/16	3-1/32	2-11/16	3 SCHD. 40
4	STB40	7-5/16	4-1/32	4-1/32	3-21/32	4 SCHD. 40
5	STB50	9	5-5/32	5-1/32	4-5/8	5 SCHD. 40
6	STB60	11	6-1/4	6-1/16	5-9/16	6 SCHD. 40
8	STB80	12-1/8	7-5/16	8-1/16	7-9/16	8 SCHD. 40
10	STB100	13-1/8	8-1/2	10-1/16	9-9/16	10 SCHD. 40
12	STB120	15	9-7/8	12-1/16	11-15/32	12 SCHD. 40
14	STB140	18	12	14	13-3/8	14 SCHD. 20



STBXX NIPPLES ARE ZINC PLATED

CUSTOMER DWG

AGREEMENT TO MAINTAIN CONFIDENTIALITY

This drawing is owned by Dixon Valve & Coupling Co. and shall be returned upon demand. It is loaned on condition that it shall not be copied or reproduced or submitted to others without the owners consent. In accepting it subject to this condition the recipient further agrees that this drawing or any design detail or concept disclosed herein shall not be used in any way detrimental to or in competition with the owner. If the recipient does not agree to the terms of this agreement they shall return this drawing immediately.



DIXON VALVE & COUPLING CO. U. S. A.		
TITLE DIMENSIONS FOR BEVELED END KING COMBINATION NIPPLES		
DRWN BY: NPC 08/06/08	CHECKED BY: <i>Jay B</i> 8/19/08	APPROVAL: <i>JTB</i> 8/8/08
MAT'L: CARBON STEEL		STBXX